

Graphing Functions – Using the Calculator

This method will work with one of these (or similar) calculators:

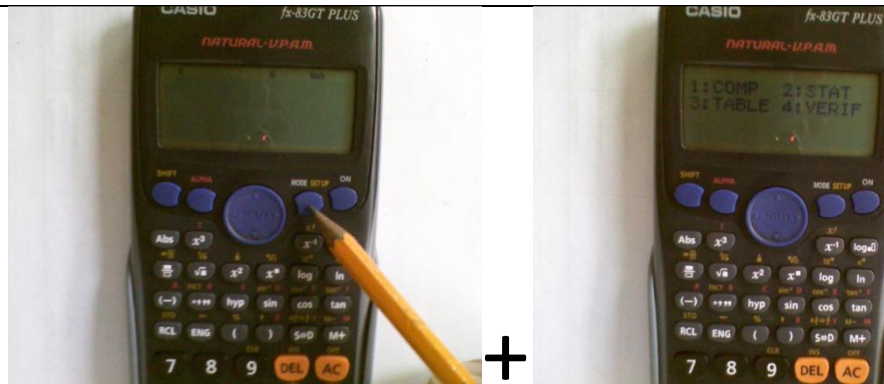
[Casio fx83GT or Casio fx-85GT]



Step 1: Make sure the calculator is in TABLE mode.

Press MODE, then 3

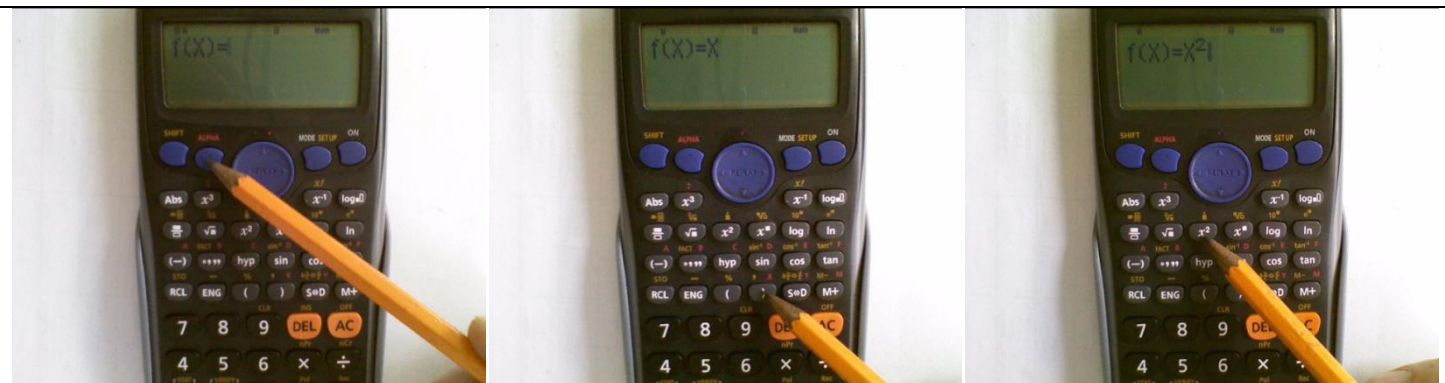
(When you have finished, and you want to return your calculator to normal, press MODE, then 1)



Step 2: Enter the Function you wish to graph

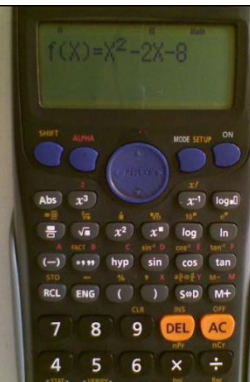
When you want to enter the letter X, press ALPHA, then the) sign [X is written above in Red]

Example pictured $x^2 - 2x - 8$



When you have finished Step 2, the screen should look like this

Step 2A: Press the [=] button



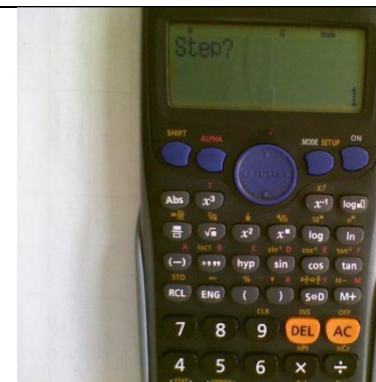
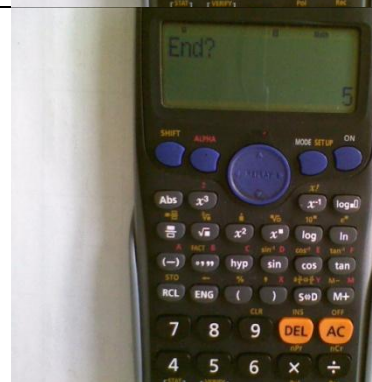
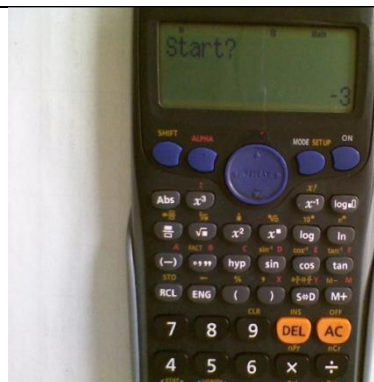
Step 3: Enter the Domain you are looking for

In this example, we will use the domain $-3 \leq x \leq 5$

So, enter the START value as -3, then press [=]

Enter the END value as 5, then press [=]

The STEP value should always be, 1, so press the [=] button to finish entering the function.



YOU NOW HAVE YOUR TABLE!!!

The numbers in the X column are your inputs (from the domain that you entered) / x-co-ordinates

The numbers in F(X) column are the corresponding outputs / y-co-ordinates

Use the arrow keys to scroll up or down

